

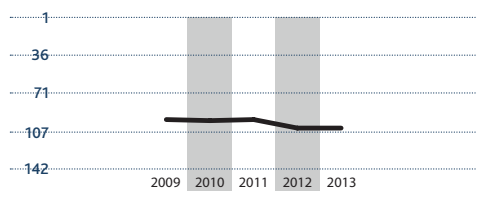
103

ASIA PACIFIC RANKING

New Zealand	5
Australia	7
Singapore	18
Hong Kong	19
Japan	21
Taiwan	22
South Korea	26
Malaysia	44
Kazakhstan	47
China	51
Thailand	52
Mongolia	57
Sri Lanka	60
Vietnam	62
Uzbekistan	63
Philippines	66
Indonesia	69
Kyrgyzstan	80
Laos	92
Tajikistan	94
Nepal	102
Bangladesh	103
India	106
Cambodia	110
Pakistan	132

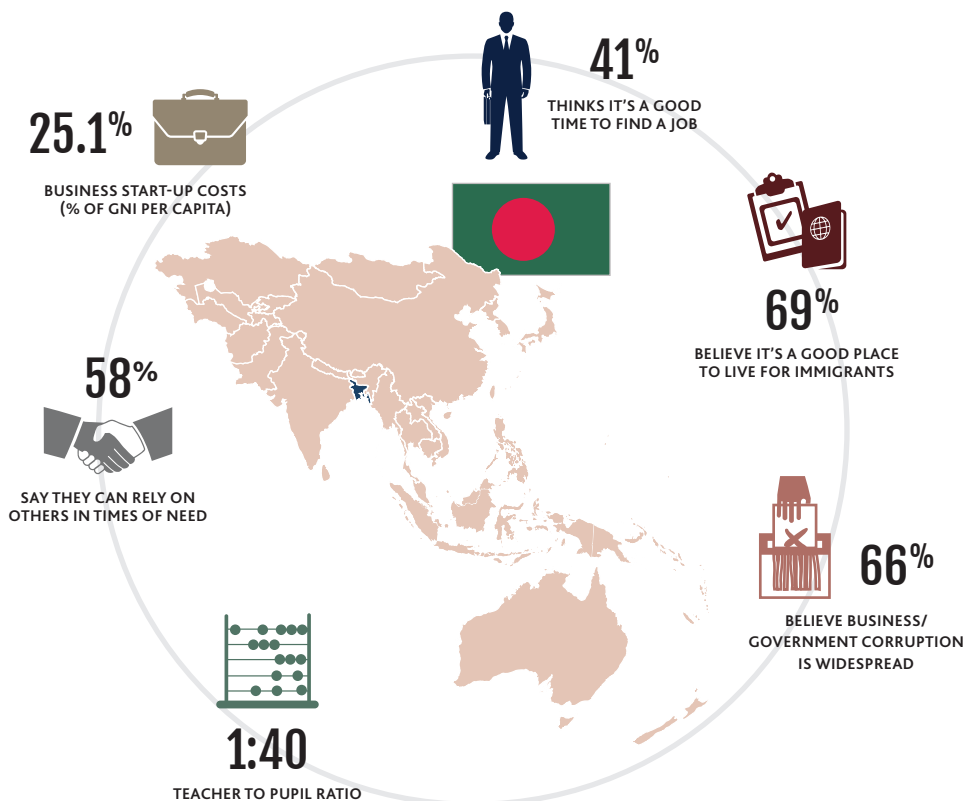
BANGLADESH

PERFORMANCE



"This decline over five years is, in part, due to the addition of 32 new countries in the 2012 Prosperity Index. In this instance, 13 of these new countries placed above Bangladesh."

- » Bangladesh rose five places on the Prosperity Index since 2009, to 103rd.
- » The country rose two places on the Safety & Security sub-index to 109th. The result of a fall in grievances between different social groups and a decrease in state violence.
- » The country improved eighteen places on the Governance sub-index, rising to 88th. This was the result of a fall in perceptions of corruption and an increase in government stability.



SUB-INDICES

77	ECONOMY	Year	Data	Global Av.
	5 year growth rate	2011	5.1%	2.7%
	Confidence in financial institutions?* (% yes)	2012	86.6%	59.5%
	Satisfaction with living standards?* (% yes)	2012	74.1%	58.2%
106	ENTREPRENEURSHIP & OPPORTUNITY			
	R&D expenditure (% of GDP)	2011	0.7%	0.8%
	Mobile phones (per 100 ppl)	2012	63.8	103.9
	Will working hard get you ahead?* (% yes)	2012	93.5%	81.0%
88	GOVERNANCE			
	Confidence in the government?* (% yes)	2012	75.6%	51.5%
	Confidence in the judiciary?* (% yes)	2012	74.3%	52.1%
	Government effectiveness ¹	2011	-0.85	0.04
101	EDUCATION			
	Gross secondary enrolment rate	2011	51.9%	79.3%
	Satisfaction with education quality?* (% yes)	2012	84.3%	66.3%
	Perception children are learning?* (% yes)	2012	78.9%	70.2%
95	HEALTH			
	Self-reported health problems?* (% yes)	2012	27.7%	23.9%
	Hospital beds* (per 1000 people)	2011	0.6	3.1
	Satisfaction with health?* (% yes)	2012	78.8%	78.2%
109	SAFETY & SECURITY			
	Human flight ²	2012	7.8	5.3
	Safe walking alone at night?* (% yes)	2012	82.4%	62.8%
	Property stolen in past 12 months?* (% yes)	2012	13.8%	16.5%
65	PERSONAL FREEDOM			
	Civil liberties ³	2012	4	4.7
	Tolerance for ethnic groups?* (% yes)	2012	84.5%	68.0%
	Satisfaction with freedom of choice?* (% yes)	2012	66.8%	71.7%
132	SOCIAL CAPITAL			
	Volunteered time in past month?* (% yes)	2012	12.9%	20.1%
	Donated to charity in past month?* (% yes)	2012	17.0%	28.3%
	Helped strangers in past month?* (% yes)	2012	50.1%	47.9%

NOTES: ¹Gov. effectiveness: values range from -1.66 to 2.25, higher values indicate higher effectiveness. ²Human flight: values range from 1 to 10, higher values indicate higher levels of human flight. ³Civil liberties: values range from 1 to 7, lower values indicate lack of civil liberties. *Survey data are taken from Gallup World Poll.